



In the studio we use a hybrid recording setup with both our 4-Track Otari MTR12 Tape Machine and our Midas Venice F16 Interface/Console.



The Midas Venice F16 provides 16ch of Midas mic/line preamps and EQs as well as handling our AD/DA conversion. We also have 2ch of high-end tube mic/instrument preamps from the Demeter VTMP-2. For compression we have 8ch of from the Klark Teknik Square One Dynamics, 2ch from the ART PRO-VLA II, 2ch from the Drawmer MX30 and 1ch from the Warm Audio WA-76. Our other outboard gear includes an Avid Eleven Rack, an E-MU Mo'Phatt, an Akai ME30P, a Samson Servo 260 Power Amp and a Korg Pitch Black Rack tuner. We use Furman Power Conditioners and ART Patchbays.



We monitor using KRK Rokit 8 G3's for playback and the ART HeadAmp6 for artist headphone mixes. Each of the studio's 6 Apple computers are outfitted with an Akai LPK25 Midi Keyboard for electronic music production and we have three Native Instrument Traktor Kontrol decks for DJ instruction and performance.



Our Mic Locker includes three Shure SM 58's, three Sennheiser MD 421 dynamic mics, three Audio Technica ATM10a pencil condenser mics, a pair of Cascade Fat Head Ribbon Mics, a pair of modified MXL 990 condenser mics, a pair of Studio Projects B1 condenser mics, a Behringer C-1 condenser mic, an MXL 991 pencil condenser, a Blue Bluebird condenser mic, a Shure BETA 52 dynamic mic, an Apex 125 dynamic mic, a Sennheiser e-835 dynamic mic, and a Peluso P-22-251 tube condenser mic. We have an extensive collection of unique, boutique and vintage instruments and amplifiers for use in the studio.



Jackson USA Randy Rhoads
Ernie Dess Swirl Finish



Ernie Ball Music Man BFR
John Petrucci 7 string



Calaveras Fretworks Catalpa



Custom Build charred Strat
Tele



Unknown custom SG



Unknown custom fan-fret



Gibson Reverse Flying V



Ibanez Gio



Gretsch Electromatic Jet Club



Epiphone Dreadnought



**Squire "Wolf" P-Bass Custom
Hand Painting**



Fender Lefty/Righty Jazz Bass



Rivera Knucklehead '55



**Panama Inferno
Peavey Windsor
Hughes & Kettner TriAmp MK2**



Unique Boutique Amplification



Music Man 212 Sixty Five



Fishman Loudbox Artist



Vintage Leslie Rotating Speaker



Two Rock Akoya Combo



Fender Rampart



Gurus Amps Naked



Vintage Chord Organ
Vintage Kurzweil RG 100
Roland RD 700 NX



Panama Conqueror



Peavey Classic Chorus 120

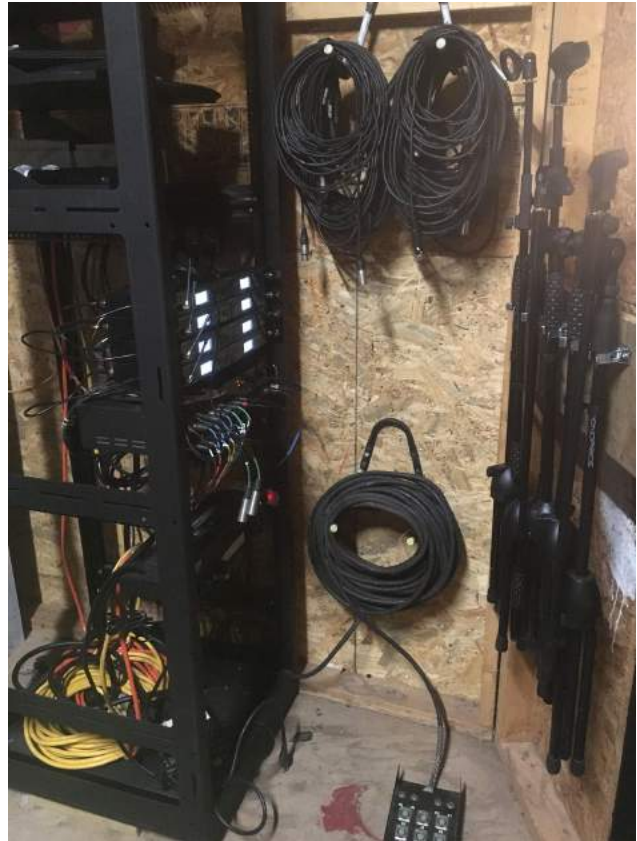


Vintage Slingerland Drums with Vintage Zildjian and Modern
Portaflex
Dream Cymbals



Ampeg Purple Monster

Our Beach Stage, Performing Arts Theatre and Dining Hall are all outfitted with Omnisistem Beta 3 Active Compact Line Arrays. The Beach Stage and Performing Arts Theatre are both outfitted with Behringer X32 Compact Mixers and S16 Stage Boxes as well as Alto Powered Monitors. Additionally we have a passive full range Peavey sound system for more spontaneous performances in various locations on camp.



For instrument instruction, band rehearsal and performance purposes we have many Electric and Acoustic Guitars, Bass Guitars, Keyboards, and Drumsets from brands like: Fender, Marshall, Epiphone, Squire, Takamine, Ibanez, Vox, Yamaha, Hartke, Acoustic, Roland, Mapex, Gretsch, Sonor and many others.









